

Process to update S-4000S/S-4000H

Please read the below mentioned update process carefully to carry out the steps properly.

* Microsoft and Windows are registered trademarks of Microsoft Corporation.

Things to Prepare

The following products/devices are necessary to carry out the update process.

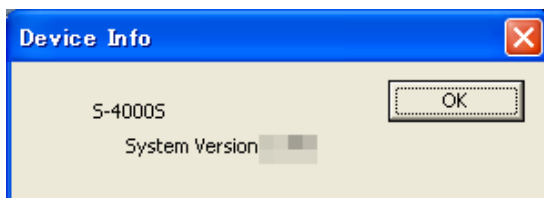
1. S-4000S or S-4000H units
2. S-4000 RCS software (Ver. 2.0 or later)
3. Windows PC equipped with serial (RS-232C) port and can run S-4000 RCS software properly.
4. Serial cable (The remote cable contained as part of S-4000R accessory or ordinary sold RS-232C cable : D-Sub 9pins, male-female, straight type)

Connection

Connect the REMOTE terminal of S-4000S/S-4000H and PC's serial port with above 4.

Checking the version number

1. Turn on power of S-4000S/S-4000H
2. Boot up S-4000 RCS
3. Select serial port where S-4000S/S-4000H is connected on serial port selection window of S-4000 RCS.
4. Click [Info] button on S-4000 RCS. The Device Info dialog will be displayed.



If you find the version number is the latest one, update process is not necessary.

Download and Unzip

Please uncompress the downloaded "S4000VERXXX.zip" file on the PC to get the "S-4000.BIN" file.

Cautions

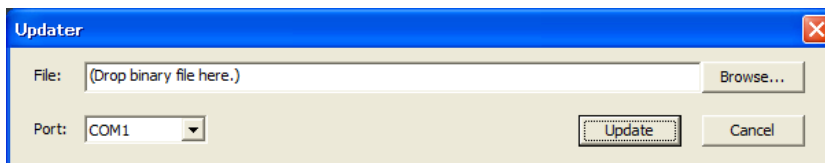
- In case the power is turned off accidentally while updating process, the unit may have eternal failure in the system. Such unit cannot be booted without repair. Please have contact with Roland service stations in such case.
- If you cannot obtain or download the update program, we are prepared to provide update services (charged, not free). Please contact with Roland service station or the dealer you have purchased the products.
- Please carry out the update process on your own responsibility. Roland cannot reply to any inquiries regarding this system software updater.

Steps to Update

Follow the steps below to install the unzipped system program "S-4000.BIN" to S-4000S/S-4000H.

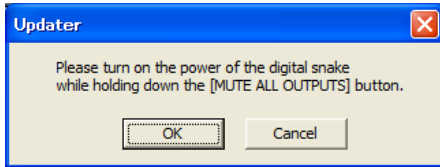
DO NOT turn off the power of S-4000S/S-4000H during the update process. It may cause eternal system failure.

1. If REAC cable is connected to any REAC ports of S-4000S/S-4000H, it should be disconnected.
2. Boot S-4000 RCS
3. Select "Updater" in "Controller" menu. You will find the Updater dialog.

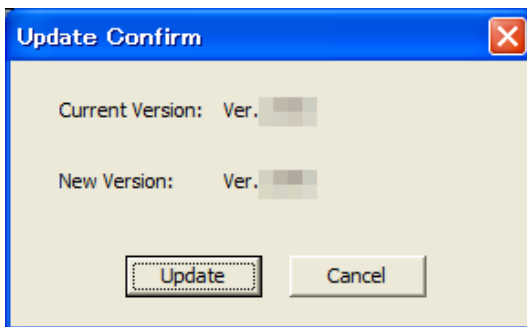


4. Click [Browse...] button and select [S-4000.BIN]
5. Select serial port where S-4000S/S-4000H is connected on serial port selection window.

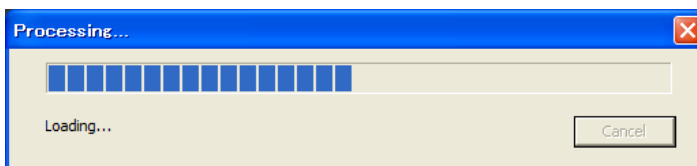
6. Click [Update]. The below message will appear.



7. Hold down [MUTE ALL OUTPUTS] button down and turn on power of S-4000S/S-4000H.
8. Click [OK]. Confirmation message will appear.



9. Click [Update] button to start system update. The below message will appear while updating process is going on.



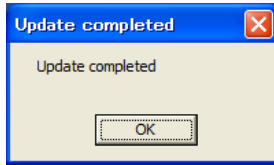
If you find "Target not respond" or other messages, it means the update process was not completed properly. In such case, leave the unit for approx 1 minute and turn on the power of S-4000S/S-4000H again.

When you do this, S-4000S/S-4000H may start system initialize automatically (takes approx 15 seconds).

- DO NOT turn off the power of S-4000S/S-4000H while the unit is initializing the system. It may cause eternal failure.
- While the unit is initializing the system, the LEDs of REAC, CTRL and MUTE ALL OUTPUTS are blinking.
- When the unit completes system initialize, the REAC indicator LED will blink. Others will turn off.

Turn off power of S-4000S/S-4000H when initializing process is completed and re-start the update process from the beginning. It is recommended to do PC Setup described below.

10. System update is completed if you find the below message.



11. Re-boot S-4000S/S-4000H.

The units automatically carry out system initializing after system update. So it takes approx 15 seconds to boot.

- DO NOT turn off power of S-4000S/S-4000H during this initializing process. It may cause eternal system failure.
- REAC, CTRL and MUTE ALL OUTPUTS indicators blink during this initializing process.
- REAC indicator will blink after this process. Others turn off.

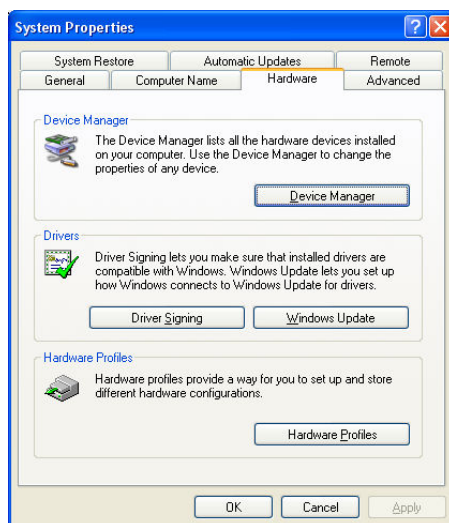
12. Check that system update is properly completed on steps "Checking the version number."

PC Setup

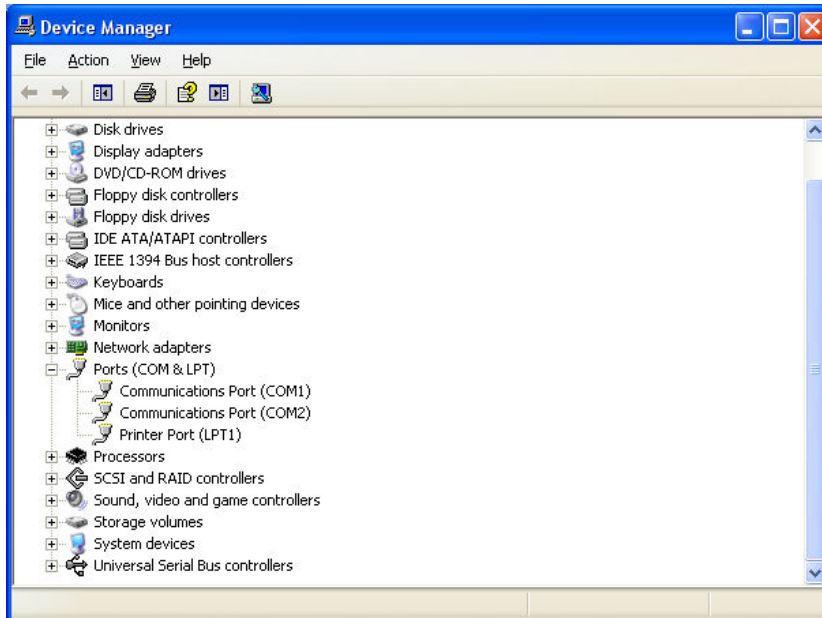
Try the following steps when you find error in update process.

If you are using Windows(R) XP

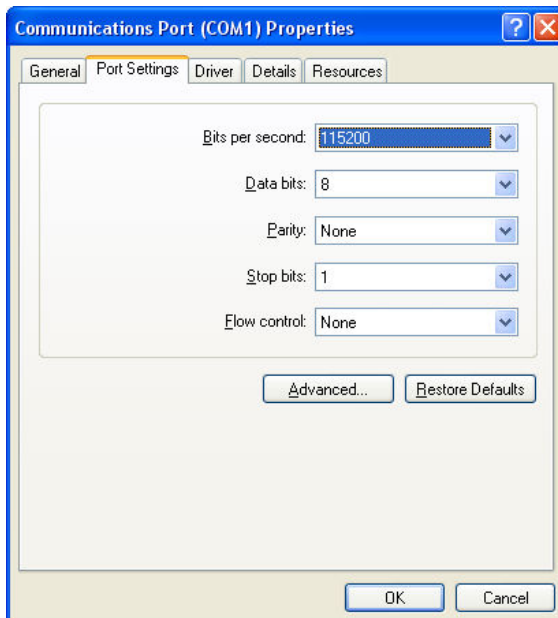
1. Open Start Menu from Start button.
2. Right click "My Computer" and select "Properties". Then open "System Properties".
3. Click "Hardware" tab.



4. Click “Device Manager” to open Device Manager
5. Click “+” of “Ports (COM & LPT)”

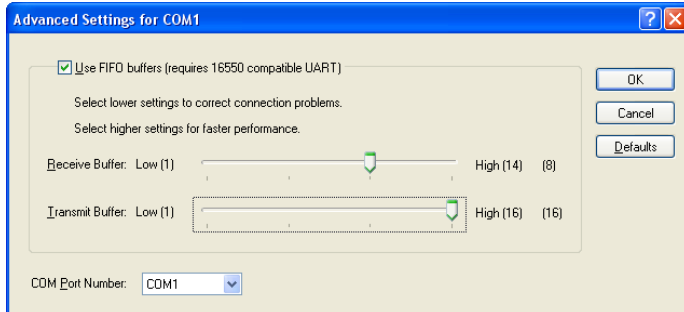


6. Select the Communication Port you are using for update with right click and select “Properties”. Open “Communication Port Properties”
7. Click “Port Setting” tab and set the Bits per second value to “115200”.



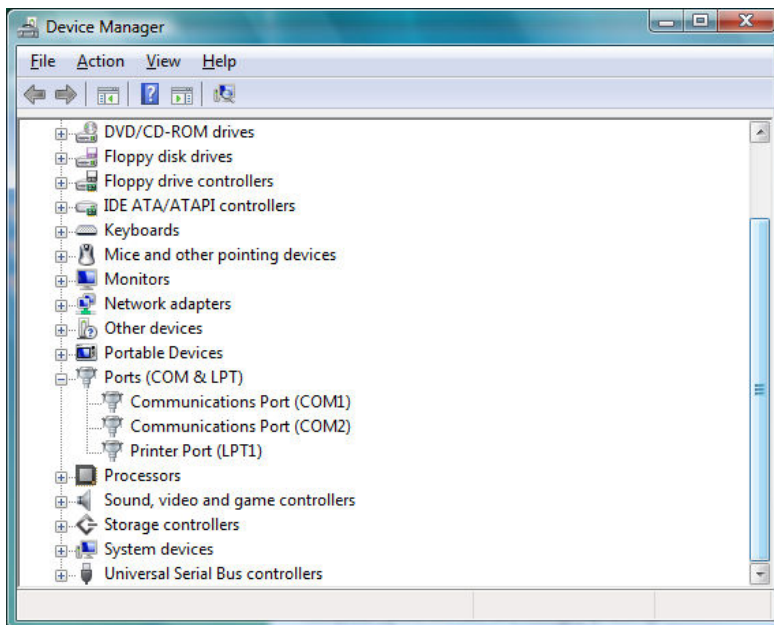
8. Click “Advanced” to open Advanced Setting dialog.

9. Set the Receive Buffer value to “8”.



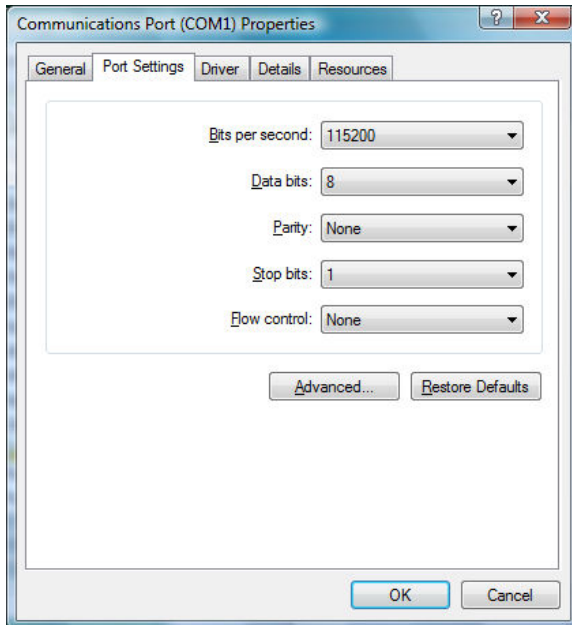
If you are using Windows(R) Vista

1. Open Start Menu from Start button.
2. Right click “Computer” and select “Properties”.
3. Click “Device Manager” to open Device Manager
4. Click “+” of “Ports (COM & LPT)”



5. Select the Communication Port you are using for update with right click and select “Properties”. Open “Communication Port Properties”

- Click "Port Setting" tab and set the Bits per second value to "115200"



- Click "Advanced" to open Advanced Setting dialog.
- Set the Receive Buffer value to "8".

